



**ATTENTION:**

**ALL AIChE CONFERENCE ATTENDEES'  
SPOUSES**

*YOUR ARE INVITED TO A CONTINENTAL BREAKFAST*

*SATURDAY MORNING JUNE 12<sup>TH</sup>*

*9:30 TO 11:30*

*SAND KEY ROOM (LOBBY)*

*MEET OLD FRIENDS AND MAKE NEW ONES!*

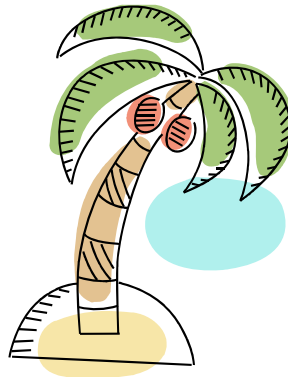
*SPONSORED BY:*

*AIChE CENTRAL  
FLORIDA CHAPTER*



*HOSTED BY:*

*ENGINEERS' WIVES CLUB  
OF POLK COUNTY*



*FOR YOUR FAMILY'S SAFETY, PLEASE NO UNESCORTED CHILDREN*